



KENTFIELD VIEW

UNLEASHING THE LEARNER WITHIN

From the Superintendent

SUMMER 2018 CONTENTS	
From the Superintendent	1
School Board Information and Trustee Election	1
Parcel Tax Renewal	1
Bacich Elementary School	2
Kent Middle School	3
New Faces in Kentfield	4
Award-Winning Educators	4
Measure D Progress	5
Measure D COC Report	6
kik and KSPTA	7
Important Dates	8



Liz Schott

There is a hard hat hanging in my office – as if I need a visual reminder that our campuses are under construction! I can hear the jackhammering at Kent, and concerns about what is to come at Bacich are a daily conversation. Car line on the last day of school had barely cleared out of the parking lot when fencing went up and preparation began for the demolition of the “round building.” Kent’s projects will be completed – except for renovation of the Back 50 play area – by the start of school in September.

Our excitement about the stunning new building that will replace the round building and be the face of Bacich is naturally tempered by concerns about the impact of construction. While we have prepared as well as we can, and have complete confidence in our contractors, who have achieved stunning results with the building projects at Kent, we know to expect the unexpected. There will be times when nerves will fray, and we will need to refocus on the end result. It will be worth it, I promise.

To residents of the McAllister, Wolfe Grade, Manor, Sir Francis Drake, and Laurel Grove neighborhoods, as well as Ross Valley Nursery School and Marin Enrichment, we apologize in advance for the inevitable inconveniences you will experience in the coming 15 months. More teachers and parent volunteers may be parking on your streets since we are losing parking on campus during construction. If you have questions or concerns about the project, please contact me by phone or email. We have an FAQ page on our website with information about the work at Bacich. Please feel free to visit it as well.

And, thank you for your support. Without it, we would not be able to construct these exemplary learning spaces in which our students can learn, play, explore, and grow.

Parcel Tax Renewal

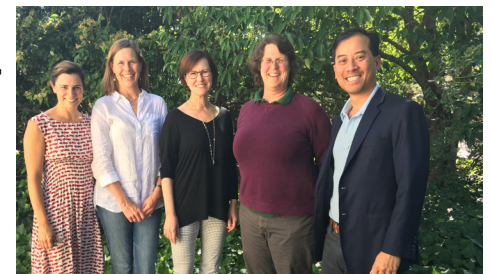


We would like to thank our community for renewing our Parcel Tax in March. Measure A guarantees a secure, locally-controlled funding stream for 25% of the District’s budget, approximately \$4.5 million per year, for the next 10 years.

The Measure A campaign succeeded thanks to the hundreds of tireless volunteers who made phone calls, knocked on doors, distributed lawn signs, and hand-addressed envelopes in January and February.

We are grateful that our community has supported our District with local parcel tax funding for over 30 years. This education funding helps keep our schools among the best in the state. Stable parcel tax funding helps the District keep class sizes small, attract and retain highly-qualified teachers, and maintain our proud tradition of academic excellence.

Measure A Parcel Tax information and accountability reports can be found on the District’s website.



Board of Trustees:
Heather McPhail Sridharan, Ashley Paff, Juli Kauffman, Cynthia Roenisch, and Quoc Tran

SCHOOL BOARD INFORMATION

Contact Details
Agendas/Minutes
Resolutions/Policies

www.kentfieldschools.org
and click “School Board”

Trustee Elections

Three Board of Trustees positions will expire in November 2018. Anyone interested in learning more about being a Trustee may contact our Superintendent at lschott@kentfieldschools.org.

The filing deadline is August 10, 2018.

VISION:

Kentfield School District will deliver a quality education that empowers our students to reach high, work hard, and be kind.

MISSION:

The Kentfield School District’s mission is to inspire and challenge all students to live, learn, and lead to their fullest potential.

Bacich Elementary School



Principal Sally Peck

Bacich School embraces its role in preparing today's students to become tomorrow's leaders while celebrating the joys of childhood.

We are a strong school community with a healthy partnership among our parents, staff, and students. There is a sense of energy, anticipation, and excitement for learning that fills the air on our campus. Bacich is a special place for our young Kentfield and Greenbrae students to grow and thrive!

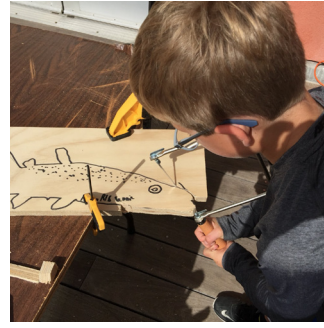
We recognize the importance of engaging our students in deep and transferable knowledge through lively classroom discussions and meaningful learning experiences. We embed these teaching practices across the curriculum. Our students are active participants in a range of learning opportunities that emphasize real-world connections while maintaining rigorous learning goals.



Engaged educators



This year, we have focused on enhancing our understanding and delivery of the Next Generation Science Standards with the guidance and expertise of our Science Coach. An all-school Project Based Learning initiative enjoyed strong collaboration and integration between mathematics, reading, writing, science, social studies, art and engineering. The project culminated in a vibrant Community Fence display with over 300 pieces of student art. Every student and many teachers in our school participated in creating this permanent display.



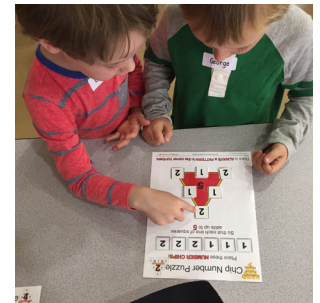
Project Based Learning



We are an educational community that believes in a culture of continuous growth and improvement. Our teachers participate in relevant professional development, which has a positive impact on student achievement. We know that there is a direct correlation between student success and excellent teaching. We believe that teacher collaboration involves thinking deeply and broadly about curriculum and student engagement.



Innovative Mathematics



This Summer, we are preparing for the launch of our school remodel. The new building will allow for greater school security and six state-of-the-art classrooms where teachers can share open teaching spaces to enhance co-teaching opportunities.

We live in a complicated world. Learning to listen, to empathize with others, to think critically and clearly, and to seek evidence to shape our thoughts supports a balanced, happy, and connected student. We strive to provide the space within a safe learning community for our children to do just that.



Neighborhood nature discovery



Active readers



Hands-on Art

Kent Middle School



Principal Skip Kniesche

As I retire from Kent Middle School, I know I can walk away with pride and confidence. Kent is a place where community and service are at the forefront of all we do. We pride ourselves on providing rigorous and engaging academics, infused with kindness, service and positivity. Our students support one another across grade levels and consistently aim high when

striving to meet both personal and school-related goals. They also serve our broader community by actively participating in community service in order to build a better world. We start by looking within, then turn outward to provide service to our families, our community, and the world.



Community builders



This year, we committed ourselves to reaching out to our neighboring communities and working together to connect ourselves with those from different backgrounds. Several students went to Laurel Dell School in San Rafael numerous times after school to guide crafts and games with the younger students on their campus. It was a rewarding experience for all! We also continued our partnership with NoBully.org by participating in staff training, student assemblies, and parent workshops.



Creative explorers



We excel academically by promoting a growth mindset for all of our staff and students. Many Kent teachers attended workshops on Project Based Learning, an approach in which students

gain knowledge and skills by working for an extended period of time to investigate and respond to an authentic, engaging, and complex challenge. All of our fifth grade history teachers have now attended the Williamsburg Teaching Institute, where they developed a deeper understanding of colonial times in America. We continue to send teachers to the Columbia Teachers College Summer Institute to hone their skills in teaching reading and writing. This professional development has revitalized teachers' thinking, and most importantly, encourages our students to lead rich and literate lives.

Kent continues to employ Common Core Math practices that teach students to understand the "why" of math rather than rote memorization of formulas. We also encourage collaborative, project-based work to prepare them for mathematics in high school, college, and beyond. Our "sheltered English" math support class provides intervention for English language learners.

Our Science teachers have implemented the Next Generation Science Standards. NGSS is "rich in content and practice, arranged in a coherent manner across disciplines and grades to provide all students an internationally benchmarked science education." We are proud of our teachers' adeptness in transitioning from traditional methods to fully integrating science in a meaningful way through hands-on projects and innovative experiments.



Collaborators

Our students demonstrate success not only through their presentations and projects in school but also through participation in extracurricular academic challenges. A number of our students participated in the annual Marin County Margie Burke Speech Tournament and returned with medals and ribbons. Students also participated in the Elk's Club Essay Contest, "Why our Veterans are America's Heroes" and came away with four awards. Our Kent Mathletes did well at the year-long Marin County math tournament, earning a second place. Numerous art students were chosen for the 2018 Youth Poster Contest.

In short, Kent has worked diligently this year to live our motto "Walk the Squawk, Fly High, RAK It Up, and Build a Better World."

New Faces In The Kentfield School District

Methinee Bozeman Bacich Elementary School Assistant Principal



Methinee Bozeman will be the new Assistant Principal at Bacich following the retirement of Katie Ward. Methinee has been the Bacich English Language Arts Lead for two years, a third grade teacher for four years, and a Kindergarten teacher for the past year.

“Methinee is a highly respected member of our staff and a gifted teacher,” said Sally Peck, Bacich Principal. “She brings excitement and a fresh perspective to the KSD administrative team.”

Methinee holds a B.A. in Sociology from the University of California at Santa Barbara and recently received her California Administrative Leadership Credential. Prior to her arrival at Bacich, Methinee was an elementary school teacher in San Francisco and Fresno.

Early in her teaching career, Methinee taught English for a year in Thailand. Throughout her career, Methinee has focused on literacy, diversity, and closing the achievement gap with post-graduate courses at Columbia University’s Teachers College and Harvard University’s Graduate School of Education.

Grant Althouse Kent Middle School Principal



The Kentfield School District welcomes Grant Althouse as the new principal at Kent Middle School beginning this Fall. Grant comes to Kentfield from a successful tenure as an elementary school principal, a middle school assistant principal, and fifth grade teacher in the Palo Alto Unified School District.

“Throughout our interview process, Grant stood out as a dynamic educator who is committed to the whole child,” said Liz Schott, Superintendent Kentfield School District. “I have never heard such praise for a professional and a person as I did when speaking to Grant’s references. It was quite inspirational.”

Grant holds an M.A. in education administration from Santa Clara University and a B.A. in English with a minor in education from U.C. Davis. Althouse has been a noted speaker on social emotional learning, inclusion, and middle school leadership at national educational conferences and completed courses on Next Generation Science Standards, social-emotional development, equity, reading, and writing. He has also attended Harvard University’s Graduate School of Education’s prestigious Art of Leadership program.

Award-Winning Educators

Barbara Libby-Steinmann Marin County Teacher of the Year and California Teacher of the Year Finalist

Bacich Elementary School Art teacher Barbara Libby-Steinmann was Marin County Teacher of the Year and the only Northern California candidate of the five finalists for California Teacher of the Year. She has integrated math, science, history, and language arts into all of her art curriculum and her influence has infused art into the teaching of all Bacich teachers. Our neighbors can see a wonderful example of her cross-disciplinary collaboration when they pass the newly-installed Bacich Community Art Fence while driving down Sir Francis Drake Boulevard. This year-long project features student art pieces, created from recycled products, that represent our local environment and history. Barbara was honored at the Marin County Golden Bell awards in May.



Photo courtesy of Mairn Magazine



Quoc Tran, Heather McPhail-Sridharan Rebecca Jelen, Fran Yang, Juli Kaufman, Ashley Paff, Kris Kuivenhoven, Liz Schott, and Barbara Libby-Steinmann

Kentfield School District Golden Bell Award Winners

Each year, Kentfield School District staff members nominate a peer whose work represents the District’s mission and commitment to excellence for the Golden Bell Award. This year’s Golden Bells were awarded to Bacich Elementary School Math Coach Fran Yang, Kent Middle School Librarian Rebecca Jelen, and Grounds and Maintenance Manager Kris Kuivenhoven. Fran’s passion for math is infectious. She is also a stellar collaborator who works with colleagues in art, technology, and science. Rebecca’s innovative approach to providing engaging opportunities for all Kent students has made the Kent Library a sought-after-hub on campus. Kris is known for his unfailingly kindness toward students, staff, and families as well as his expertise in keeping our buildings and grounds safe and efficient. We thank all of our standout employees for their dedication to our district.

Measure D: Project Progress

Bacich Elementary School Projects



BACICH CONSTRUCTION PLANS AND “ROUND BUILDING” FAREWELL

Measure D modernization projects have kicked off at Bacich Elementary School with the demolition of the outdated 1970s “round building” at the end of June 2018. Replacing the round building will be a new complex housing six new classrooms, small group instructional spaces, a Maker Space, and administrative offices. To increase campus security and provide easier access for families, administrative offices will be located at the front of the campus entrance. An outdoor creative play space will surround the new building to provide teachers with nature-based learning stations, and give students a quiet place to play away from the busy playground and athletic fields.

All existing classrooms will receive more efficient and modern heating and electrical systems. Interactive audio-visual teaching displays and flexible furnishings in classrooms will allow teachers to create educational environments that align with the latest educational design practices.

Construction will continue through this school year with planned completion by the start of school in 2019. Please see our website for Bacich site plans and construction information.



Bacich Construction Information
sites.google.com/kentfieldschools.org/bacich-modernization

Kent Middle School Projects



COMPLETED KENT CONSTRUCTION PROJECTS

It has been a productive year of construction at Kent. The new administrative complex that puts eyes on the entrance to campus and provides much-needed conference room space opened after Spring Break. The former administrative offices are being repurposed into new classrooms and counseling offices. The other highly visible project at Kent, the new music classroom, is slated for completion in time for the start of the 2018-19 school year. The redesign of the woodshop to include a modern Maker Space will connect to the art classroom offering students more opportunities for collaborative, interdisciplinary projects.

Work that is going on behind walls of all classrooms include energy efficient ceiling fans and heating units, integrated audio-visual systems, and flexible furniture that can be easily arranged to facilitate various learning environments. Kent’s new construction projects will exceed requirements for California’s Green Building Code. Work at Kent will wrap up at the end of this Summer.

Measure D: Citizens Oversight Committee 2018 Report

Kentfield School District's Measure D General Obligation Bonds were authorized in the general election of November 2014. Seventy percent of voters in our school District approved the issuance and sale of bonds with a principal amount not to exceed \$30,000,000.

Proposition 39, approved in 2000 by California voters, provided that the governing board of a school District may pursue the authorization and issuance of bonds by a 55% vote of the electorate.

In accordance with the requirements of Proposition 39, the District established a Citizens Oversight Committee to actively review and report on the expenditure of bond revenues. Members of the committee represent the constituencies prescribed by Proposition 39.

History of Measure D

In response to growing enrollment at Bacich, the Kentfield School Board commissioned a demographic study in 2014 which predicted a growth of 20 students per year for the next 10 years. Based on this information, Measure D was placed on the November 2014 ballot, requesting taxpayer approval of \$30,000,000 in bonds to accomplish three goals: relieve campus overcrowding, increase security and safety, and modernize our aging facilities. A component of relieving overcrowding was to move fourth grade to Kent and build classrooms there to accommodate this redistribution of students.

Upon passage of Measure D, the Board engaged the services of CSDA Design Group to lead the community through master facilities planning, and subsequently hired QKA Architects, Counterpoint Construction Services for construction management services, and Lathrop Construction as its builders. An inclusive, nine-month-long design process engaged staff and parents in planning additions and improvements. Subsequent monitoring of enrollment trends indicated that growth projections were overestimated, making the 4th grade move to Kent, and the new classroom building planned to accommodate the growth, unnecessary.

DISTRICT AT-A-GLANCE	
Students	
Bacich	638
Kent	573
Certificated Staff	
Bacich	43.55
Kent	43.85
District Office	2
Classified Staff	
Bacich	18.83
Kent	14.57
District Office	5
<i>Adopted Budget, June 12, 2018</i>	

CITIZENS OVERSIGHT COMMITTEE MEMBERS	
Name	Constituency
Renee Marcelle, Chair	Parent/PTA
Allison Salzer, Vice-Chair	Business Owner
Ross McKenna	Senior
Debra Fletcher	Community-at-large
Dan Calahorro	Community-at-large
Greg Feller	Community-at-large
Tracy Coombe	Parent
Ralph Miller	Taxpayer Organization Member
2018-2019 COC Meetings	
October 10, 2018	
January 16, 2019	
April 17, 2019	
5:00 p.m in the District Office.	
<i>*Meeting dates subject to change. Please check the calendar on our website.</i>	

Modernization and safety upgrades have been completed at Kent, and new administrative offices and a music classroom have been built. Bacich building and renovation began this Summer.

Budget Overviews

In fulfillment of its duties, the Citizens Oversight Committee reviewed the School Board-approved annual financial and performance audits (June 30, 2017) of the Measure D Building Fund and confirmed that bond funds are being expended only for the purposes described in the ballot measure.

As of March 31, 2018, \$12,042,000 in bonds (of the \$30M approved by Measure D) have been issued, and \$7,766,114 have been spent. There has been \$121,569 in interest earned on unspent revenues. This leaves a balance of \$4,400,515 from the initial bond issuance. The School Board approved selling the remaining \$17,958,000 at its April 2018 meeting to complete the projects.

For site planning images and a detailed breakdown of expenditures please visit the Local Funding and Business Services sections on the Kentfield School District website.

MEASURE D BUDGET	
<i>as of March 31, 2018</i>	
Revenue 2014-2018	
Bond Sale Proceeds	\$12,042,00
Interest	\$121,569
Local Revenue	\$3,059
Total Revenue	\$12,166,628
Expenditures 2014-2018	
	(\$7,766,114)
Bond Balance	
Cash Balance	\$4,400,515
Unissued bonds	\$17,958,000

Supporting Public Education



Kentfield Schools PTA continued to rock the community connections and family engagement.



Community-building events

We kicked the year off with new family socials, back-to-school coffees and Pizza and Games Night. Our kids rolled through Fall with Bike/Walk to School Days and the Bacich Halloween Parade. Families got a great start on their holiday gifts with the Book and Craft Fairs. We celebrated Chinese New Year with lion dancers and dim sum. Folks took Spring by storm with Maker Fair, Bloom, and Teacher Appreciation Week. We ended the year strong, celebrating all we accomplished with the home grown Kentfield Music Festival.

In October, we stuffed hundreds of backpacks with essentials for families who lost their homes in the Sonoma and Lake County fires. Sixty-four volunteers per week served over 23,000 lunches at Bacich and 25,000 lunches at Kent. Our entire Executive Board hoofed it up and down the hills of this beautiful community to make sure the Parcel Tax passed and our schools continue to receive essential funding for the next ten years.



Community service

We provided parents with several opportunities to sharpen their skills through KSPTA-sponsored Parent Education, including a 6-week course in Love and Logic Parenting, Creating a “Player First” environment in sports, and learning how to have a “good enough” family and be perfectly satisfied.

None of this would have been possible without the support of local businesses, our amazing volunteers, and community members. Thank you to all who shared their talents and resources with our schools!



Kentfield Invests in Kids (kik) is the non-profit foundation that supports the Kentfield School District through an annual Business Campaign, Annual Giving (family donations), and a Spring Auction Event.

Thanks to the generous donors in our community, **kik** successfully raised \$1,100,000 last year. The Fund-A Need at our Spring Event raised over \$90k for the renovation of the Back 50 play space at Kent.



Students designing a **kik**-funded play area



In addition, to raising crucial funds, **kik** hosts community events that bring families together. Our Family Fun Day and One Mile Fun Run in September had a fantastic turnout. Kentfield families love reconnecting with old friends and meeting new families at our selected grade-level-focused Heart of the Community events.

Unfortunately, the State of California does not provide enough funding for the level of education that we value for Kentfield students. The \$1,100,000 raised by **kik** funds valued enrichment programs including art, PE, music, technology, Maker Space, and more.



I ♥ the 80s! event



kik and KSPTA contribute vital resources that allow our District to offer students outstanding and innovative learning opportunities well beyond standard public education.
Thank you to our community for another successful year!



750 College Avenue
 Kentfield, CA 94904
 415-458-5130

www.kentfieldschools.org

PRSR STD
 U.S. POSTAGE
 PAID
 SAN RAFAEL, CA
 PERMIT NO. 384
 ECRWSS

Residential Customer

IMPORTANT DATES Please visit our District calendar at www.kentfieldschools.org	
AUGUST 2018	
27	School Board Meeting, 5 p.m.
28	TK/Kindergarten Back to School Night, 6-7 p.m.
29	Bacich 1 st -4 th Grade New Family Social,* 6-7 p.m.
30	Kent 5th Grade Orientation, 9 am-11:30 a.m. Kent New Family Social,* 11:30 a.m.
SEPTEMBER 2018	
4	First Day of School
	Bacich Coffee Morning,* 7:40 a.m.
5	Kent Coffee Morning,* 8:10 a.m.
	Bacich 1 st -4 th Grade Back to School Night, 6-7:30 p.m.
6	Kent Back to School Night, 6-8:30 pm (0 period music class begins at 5:45 pm)
7	5th Grade Event,** 5:30-6:30 p.m.
9	TK/Kindergarten Event,** 10-11 a.m.
11	School Board Meeting, 5 p.m.
13	Bacich Games & Pizza Night,* 5:30 p.m.
23	Family Fun Day,** 10 a.m.
* hosted by KSPTA ** hosted by kik	



Is Your Driveway Available for Bacich Staff Parking?

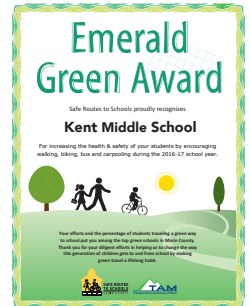
Due to construction at Bacich next year, the Bacich parking lot will be unavailable. Many Kentfield families near the Bacich campus have generously offered their driveways for staff parking. If you are able to offer your driveway for Bacich staff parking during school hours in the 2018-19 school year, please contact Superintendent Liz Schott, lschott@kentfieldschools.org. Thank you!

Safe Routes to School

Kentfield's Safe Routes to School team of volunteers help our students to get to and from school safely. Volunteers created a network of safe walking and biking routes from each of our District's neighborhoods, and they provide educational outreach to teach students safe habits to use in traveling to and from school.

Since 2008, "person-powered" school transportation methods increased at Kent by 68% and at Bacich by 64%. Both Bacich and Kent decreased single family car transportation by 6%.

Safe Routes to School neighborhood routes and information can be found on our District website.



Kentfield School District educates 1,211 students in Transitional Kindergarten through 8th grade at Bacich Elementary School and Kent Middle School.

Our teachers offer innovative, award-winning programs that engage our students' creativity, character, and curiosity, and empower them to reach high, work hard, and be kind.